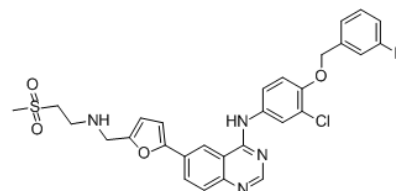


Product Name : Lapatinib
Cat. No. : PC-45894
CAS No. : 231277-92-2
Molecular Formula : C₂₉H₂₆ClFN₄O₄S
Molecular Weight : 581.0576
Target : EGFR
Solubility : DMSO: ≥ 39 mg/mL



Biological Activity

Lapatinib (GW572016) is a reversible, selective dual tyrosine kinase inhibitor of both **EGFR** and **ErbB2** with IC₅₀ of 10.8 and 9.2 nM in cell-free assays, respectively.

Lapatinib (GW572016) displays no significant activity against other kinases, including ErbB4, c-Src, and c-Raf1.

Lapatinib (GW572016) reduces tyrosine phosphorylation of EGFR and erbB2, and inhibits activation of Erk1/2 and AKT both in vitro and in vivo.

Lapatinib (GW572016) inhibits tumor xenograft growth of the HN5 and BT474 cells in a dose-responsive manner at 30 and 100 mg/kg; orally active.

References

Xia W, et al. **Oncogene**. 2002 Sep 12;21(41):6255-63.

Rusnak DW, et al. **Mol Cancer Ther**. 2001 Dec;1(2):85-94.

Konecny GE, et al. **Cancer Res**. 2006 Feb 1;66(3):1630-9.

Caution: Product has not been fully validated for medical applications. Lab Use Only!

E-mail: tech@probechem.com